

Ball Valve 3" and Fittings

Designed and made in New Zealand TRUDESIGN™ Certified Ball Valves are specifically designed for use in marine applications above and below the water line.

- Certified to ISO 9093:2021 by the International Marine Certification Institute (IMCI, Belgium) when fitted to TRUDESIGN Skin Fittings (Thru Hulls)
- Comply with ABYC H-27 500Lb load bearing standard when used in conjunction with TruDesign Skin Fittings (Thru Hulls).



Features:

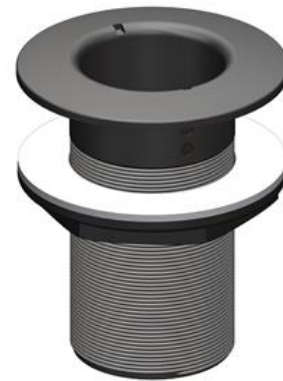
- Manufactured from a glass-reinforced Nylon composite – High strength, tough and light weight – The Ball Valve weighs less than 1.5Kg (7.7 Lbs).
- Immune to corrosion & electrolysis – increased safety.
- The Ball Valve can be locked in the closed position.
- Electrically non-conductive. No electrical bonding.
- Suitable for use on all hull types - aluminium, steel, wood, or GRP.
- The ball and sealing rings utilise a PTFE polymer to ensure smooth action and minimal fouling.
- Large operating range – Suitable for all marine conditions from -40°C to +110°C
- BSP Thread
- U.V resistant – No degradation from the sun's ultraviolet rays.
- 100% leak tested before leaving factory.

Fittings – 3"

Intake Strainer 3" BSP – Thru Hull



Skin Fitting / Thru Hull 3" BSP



Tail 3" BSP, 75mm (3")



Tail 3" BSP, 63mm (2 1/2")



Connector 90°, 3" BSP
M/F

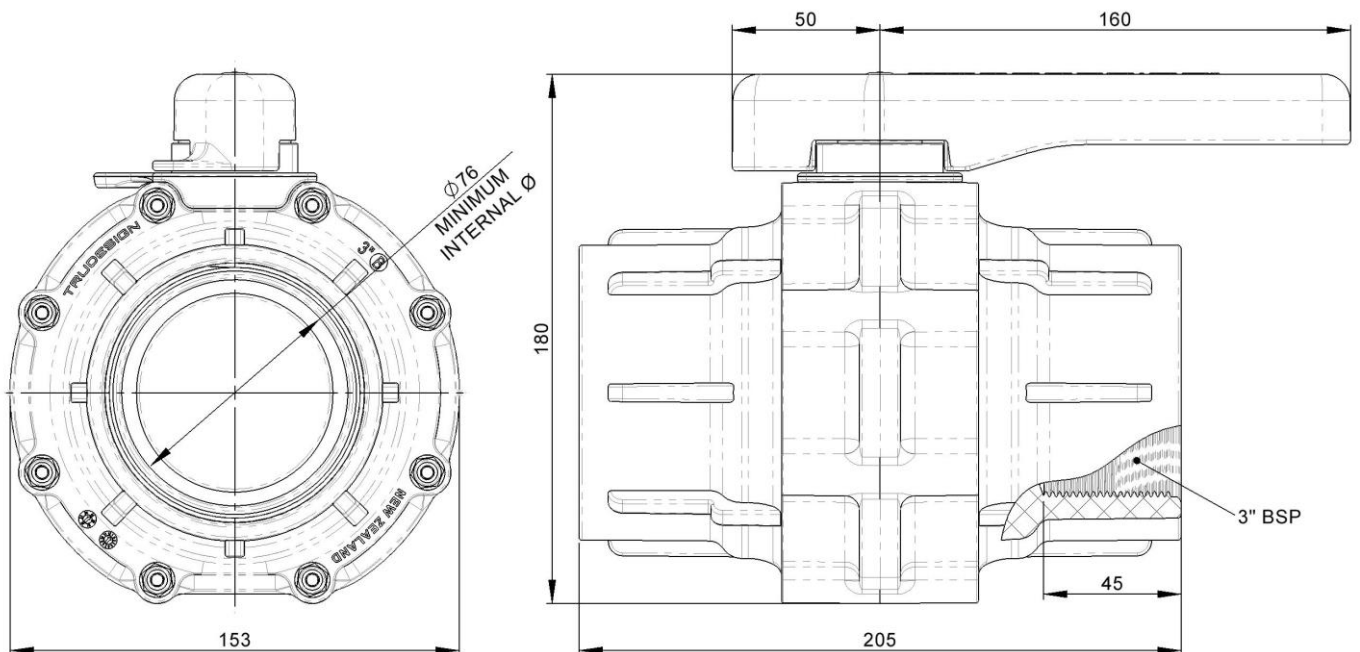


Features:

- The Intake Strainer / Thru Hull has an integrated Hi Flow scoop, designed with flared intake channels to maximise flow efficiency yet prevent large debris entry. Undercuts on the base assist with sealing against the hull surfaces.
- Both the Intake Strainer and Thru Hulls / Skin Fittings are 160mm long (from the underside of head) to cater for larger vessels. See separate Information Sheet – Skin Fittings.
- Two sizes of Tail are available – 75mm (3") Hose Tail or 63mm (2 1/2") Hose Tail.

Part Numbers

Part Number	Description
91157	Ball Valve 3-inch BSP
91160	Skin Fitting / Thru Hull Domed 3" BSP
91159	Intake Strainer / Thu Hull 3" BSP
91161	Tail 75mm 3" BSP
91162	Tail Unequal 63mm 3" BSP
91165	Connector 3" BSP 90° Female / Male
91365	Spanner / Wrench 3" Ball Valve Aluminium
91366	Spanner / Wrench 3" Skin Fitting Nut Aluminium



The information contained in this information sheet is for general information purposes only. The information is provided by TruDesign™ and while we endeavour to keep the information up to date and correct, we make no representations or warranties of any kind, express or implied, about the completeness, accuracy, reliability, suitability, or availability. Any reliance you place on such information is therefore strictly at your own risk. It is recommended for Thru Hulls and Ball Valve installations that you consult a qualified Shipwright.