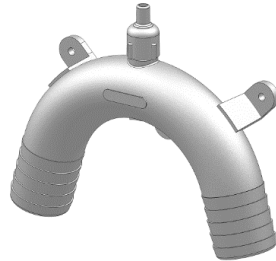




## Vented Loop Instructions

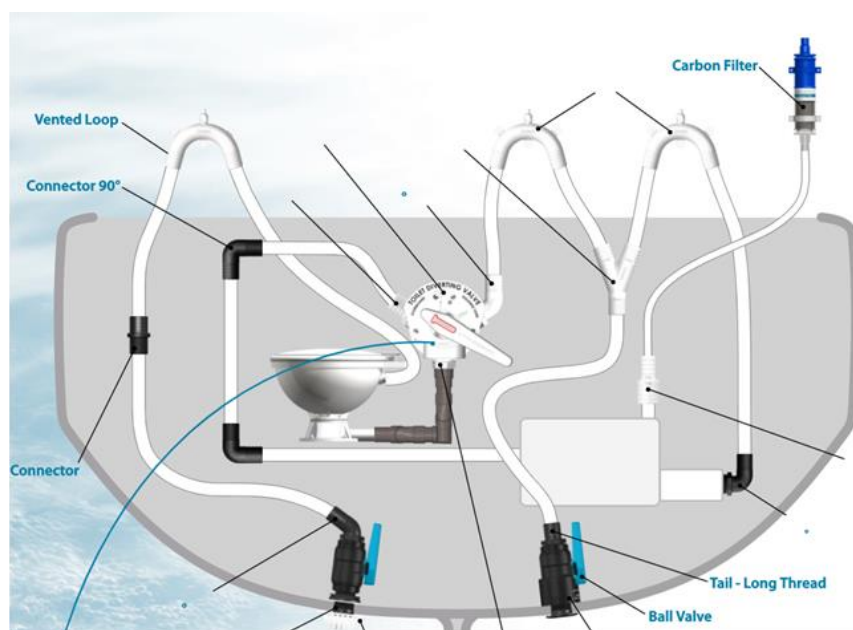


### INSTALLATION

Place in a protected location to minimize the chance of inadvertent damage. Mount a minimum of 250mm (1') above the heeled water line. If mounted below the waterline, the vented loop will not leak, but will not provide any protection.

Screw to a bulkhead or other robust structure using the integral feet. Dual hose clamps should be fitted to ensure the hose does not become disengaged from the Vented Loop. Fluid can flow in either direction however, must be pumped through the Vented Loop not pulled or drawn through.

For Electric Toilet applications a Solenoid controlled Vented Loop should be used as this allows the vent to be switched to fully closed during flush cycle. Allowing greater flow of water by eliminating air entering the system when an electric toilet is in flush mode. The solenoid used is normally open, requiring power only to close the valve. See Product Information sheet – Vented Loop with Solenoid.



## SERVICING

Check sanitation hoses for scale build up as this often will point to scale build up in the vented loop. Flushing the toilet system with vinegar helps remove scale.

Hose clamps should be checked for secure connection of the hoses to the Vented Loop.

Regular checks of the functioning of the duck bill valve should be conducted. Unscrew the cap and remove the valve. Inspect the valve for damage. Check the port in the top of the vented loop for blockages and clear if required. Gently squeezing the sides of the valve should open a hole in the valve.

If the valve is damaged, a service kit is available. The service kit contains a spare valve, cap and a pin for clearing the port in the top of the vented loop.



Part #	Description
90325	Spare Parts Vented Loop White
90324	Spare Parts Vented Loop Black

**Website** - Further information is available on our web site

<https://www.trudesign.nz/marine/products#vents>

The information contained in this information sheet is for general information purposes only. The information is provided by TruDesign™ and while we endeavour to keep the information up to date and correct, we make no representations or warranties of any kind, express or implied, about the completeness, accuracy, reliability, suitability or availability. Any reliance you place on such information is therefore strictly at your own risk.